

HIGH HOLY DAYS ISSUE

Beth Israel



CONGREGATION BETH ISRAEL OF SAN DIEGO • FALL 2021 / ת"ו 5782



Beth Israel Quarterly

FALL 2021 / תש"פ 5782



3 Messages from Rabbi Jason Nevarez & President Dan Jones

5 High Holy Days — In-Person at Beth Israel

6 Forgiveness In the Time of Covid

Rabbi Cantor Bernstein discusses the importance of forgiveness in these times.

8 Welcome New Members

10 The Revamping of Women of Beth Israel

Women of Beth Israel in a nutshell. Meet the Co-Presidents.

11 What's Happening at Beth Israel

14 Men's Club of Beth Israel

Friendships, mitzvot and community.

16 Q&A with Beth Israel Members Judy Horowitz-Glenn & Gordon Glenn

17 Mazal Tov! B'nai Mitzvah, Baby Namings and Weddings

18 Meet Your Board Member and Community Volunteer

19 Thank You for Your Contributions!

22 Beth Israel Annual Review

30 Thank You to our Generous Donors

Ner Tamid Circle, Dor l'Dor Society and our Sustaining Members make things possible.





WHEN WE BUILD OUR *Sacred Space*

A year and a half ago, we transcended physical distance and challenges to show up for one another. We harmonized on mute, shared words of joy and sympathy, and engaged in commentary in our online chat boxes. And through it all, our Beth Israel community has only grown stronger. Our hearts have been full as we reopened for in-person services, as California lifted nearly all its COVID-19 restrictions.

We are deeply grateful that, once again, we can sing and pray and eat together. We return with a greater awareness of how precious life is, and how important community truly is.

As we approach our Jewish New Year of 5782 (in our new normal), I started reflecting on the time when the Israelites were at the beginning of their journey and God declares, “Build me a sanctuary so I may dwell *b’tocham*.” The word *b’tocham* actually has two translations: to “dwell *among* them,” and to “dwell *within* them.” Both translations call for the purpose and necessity of sacred space. This year, I have come to see that the building of sacred space is not for God; rather, it is for **us**. We build sacred space in order to create an opening within us that allows the Divine presence to dwell.

This year, like many of you, I have opened my heart to ever-expanding interpretations of the question: Where can we create sacred space? I have learned that sacred space can dwell in both the physical and virtual. From FaceTime or Zoom shivah minyanim to Torah study and Shabbat services, b’nai mitzvah, and other milestone moments, this year we were able to continue to bring people together for the most intimate moments of their lives. We were able to engage more of you in our learning and services than ever before. Grandparents across the country could watch as their grandchild in San Diego chanted Torah. The number of classes we offered multiplied our engagement opportunities. And our congregation has transformed into one that can be accessed throughout the globe.

As we enter this new year by offering diverse access opportunities (in-person and virtual), my hope is that these new, sacred spaces continue to enhance all the wonderful and meaningful engagement opportunities our beautiful community has to offer; that we continue to expand our sanctuary for God to dwell among us – and within us.

I look forward to greeting many of you over the coming weeks, and offer you this intention, as we work to find our evolving sacred spaces in 5782:

May we recognize our solidarity with our fellow sojourners on this earth, so that no human being be treated as “other,” that our common humanity is woven into one fabric of mutuality.

May the Jewish people, the state of Israel, and all peoples know peace in this New Year, and may we continue to nurture kindness and love everywhere.

May we recall what this season asks of us: Who is the person I yearn to be? What is the quality of relationship that I want in my life? What kind of world do I wish to live in? How can the rituals, the melodies, the shofar blast, the apples and honey, help remind me of these overarching questions I am asking about my life?

In 5782, may all of us find the sacred in the wrestling and dwelling, and may we be sealed in goodness and in blessing.

Contact Rabbi Nevarez at rabbinevarez@cbisd.org



FINDING AND *using* YOUR voice

It has been an interesting couple of months since our last Beth Israel Quarterly! Our state, our city, and our beloved synagogue have all been going through the process of returning to “normal.” While, unfortunately, parts of our country have not been as successful – here in San Diego, we have all watched closely as our overall COVID situation continues to improve. Many thanks to the members who stepped up to opine and advise on our Reopening Task Force. This phenomenal collection of Beth Israel staff, medical and mental health professionals, educators, and logistics experts from our community have helped us develop and implement the planning and process for getting us to the operational level we are at today. This task force continues to meet to review our ongoing safety status as well as advising on best practices for our upcoming High Holy Days.

The Reopening Task Force is an excellent example of what our member volunteers can accomplish when we come together. Our synagogue will continue to grow and flourish based on the contributions of our three key cohorts: our wonderful clergy team, our tireless professional staff, and our army of member volunteers. It is our member volunteers that I would like to concentrate on in this article.

From my own experience (which I realize pales in duration to some of our members who have been with us for 50+ years), I have experienced the importance of our members finding their “voice” in our community. Some find their voice in committees, some in thoughtful emails, some in spontaneous conversations at services, and some through literally raising their voices (and elevating our spirits) in prayer.

During the social disconnection of COVID, many of us may have felt that we have “lost our voice,” in our synagogue community. I invite you to rediscover it, or perhaps, find it for the first time. Did you know that any member can attend one of our Board of Directors meetings? Did you know that any member can attend any committee meeting with the permission of that committee chair? Did you know that any member should feel comfortable reaching out to our Senior Rabbi, our Executive Director, or myself? Beth Israel has many ways for you to get involved, express and explore your Judaism, find a leadership opportunity, or be part of one of our many thriving sub-communities within our larger community. Social Action, Membership and Engagement, Israel, Adult Education, Youth Education, Choir, Security, Caring Community, Development, Chavurot, Parent Connection, Men’s Club, Women of Beth Israel – all of these and more are areas that want and need your engagement. Our scope at Beth Israel is wide and vibrant, but to sustain itself and grow, it needs all of us to find our area of participation – to find our voice in our community.

The lay leaders within our community do not arrive at the steps of our synagogue fully formed – nor would we want them to be. Our greatest leaders have been developed from within the walls of our synagogue as they found their voice through participation and engagement.

If you want to get re-connected in your Beth Israel journey or want to begin it, a great place to start is by contacting Bethany Eisenberg, Membership and Engagement Director, at beisenberg@cbisd.org

Please find me at our upcoming High Holy Days services, where I look forward to being in community with you and hearing about your own Beth Israel journey.

HIGH HOLY DAYS 5782 AT BETH ISRAEL



SELICHOT - Saturday, August 28

7:00 – 8:00 p.m. S'lichot Program: The music of High Holy Days from the Cutting Room Floor
8:00 – 9:15 p.m. S'lichot Service with clergy

EREV ROSH HASHANAH - Monday, September 6 6:15 p.m. Erev Rosh Hashanah Service

ROSH HASHANAH - Tuesday, September 7

8:30 a.m. Family Rosh Hashanah Service
9:00 a.m. Café Beth Israel
11:00 a.m. Rosh Hashanah Service (BITY reflections post Torah service)
11:30 a.m. Café Beth Israel
4:00 p.m. Tot Rosh Hashanah
5:30 p.m. Teen Gathering at La Jolla Shores
6:00 p.m. Tashlich at La Jolla Shores

ROSH HASHANAH 2nd DAY - Wednesday, September 8

9:00 a.m. Second Day Morning Service followed by a light Kiddush lunch
11:00 a.m. Hike

KEVER AVOT CEMETERY MEMORIAL SERVICES Sunday, September 12 TBD

KOL NIDRE - Tuesday, October 8

6:00 p.m. Kol Nidre Service
8:30 p.m. Kol Nidre Service

YOM KIPPUR - Thursday, September 16

8:30 a.m. Family Yom Kippur Service
11:00 a.m. Morning Service (BITY reflections post Torah service)

12 Noon – 2:00 p.m. Food for Thought:

Session 1 – 12:00 – 1:00 pm: Critical Race Theory, Cancel Culture, and Jewish Memory with Rabbi Philip Graubart
Session 2 – 1:15 – 2:00 pm: Sermon Talk Back with Rabbi Nevarez
2:30 – 3:30 p.m. Contemporary Confessions
4:00 p.m. Afternoon Service
5:00 p.m. Yizkor and Neilah Services
6:15 p.m. Break the Fast

EREV SUKKOT - Monday, September 20

5:30 p.m. Sukkot Picnic

SUKKOT - Tuesday, September 21

10:00 a.m. Morning Service followed by a light Kiddush lunch

SHABBAT SUKKOT - Friday, September 24

6:15 p.m. Erev Shabbat Service and Celebration

EREV SIMCHAT TORAH - Monday, September 27

6:30 p.m. Erev Simchat Torah Service

SIMCHAT TORAH - Tuesday, September 28

10:00 a.m. Sh'mini Atzeret/Simchat Torah Yizkor Service followed by a light Kiddush lunch

Services listed in green require a ticket for entry

SERVICE DESCRIPTIONS

Erev Rosh Hashanah – We will have one service this year, infused with an array of music and liturgy that speak to our entire community. This service will feature both our Youth/Teen Choir and Band along with our adult Zimriyah Chorale.

Rosh Hashanah Day I and Yom Kippur Morning Family Service – This service will feature the Youth & Teen Choir and Band, as well as informal reflections from our clergy. If you have attended the generational service in previous years, many of the elements will remain. We have made enhancements to the service to be more

inviting for families with students grades 2 through pre-b'nai mitzvah. All generations are invited to join us for this rich service!

Rosh Hashanah Day I and Yom Kippur Morning Late Service – The late morning services will include our Zimriyah Chorale and musicians, as well as a traditional sermon offered by one of our clergy.

Kol Nidre – As in years past, our two Kol Nidre services are identical, both featuring Kol Nidre played on cello and sung by our Rabbi/Cantor and choir, as well as a rabbinic sermon.



DETAILS

HIGH HOLY DAYS 2021/5782



These are our HHD plans at time of printing of this publication. Given the rapidly evolving situation with Covid-19, plans are subject to change. We will continue to review the latest county, state and CDC Covid-19 recommendations for guidance. Please check our web site for the most up to date information.



*Do a mitzvah!
Make a difference!
Join the Ner Tamid Circle!*

Examples of benefits include:

- Extra High Holy Days Guest Tickets
- Discounts on facility rental
- Tribute & memorial cards

By joining the Ner Tamid Circle, you help make membership accessible and give the gift of belonging. Contact: Director of Membership & Engagement Bethany Eisenberg, beisenberg@cbisd.org or (858) 900-2554.

LIVE STREAMING

We're pleased to welcome you to Beth Israel through our live streamed services. Thirty minutes before each service, use the link below for live streaming.

Link: <https://cbisd.org/worship/hhd5782>

TICKET PROCESS

- You will not receive tickets automatically in the mail. Adult and Youth Admission Tickets are included in your membership and will be valid for all services and times. Please fill out the Ticket Request Form enclosed in this High Holy Days packet with your service preferences and the number of members in your family attending services -- including youth/children. Every individual will need his or her own ticket. If your child requires a seat, he or she will need a Youth Admission Ticket. Once complete, return your form to Beth Israel at your earliest convenience by mail, email to cbi@cbisd.org, by fax at (858) 900-2502, hand delivery to Beth Israel, online at www.cbisd.org, or by phone at (858) 900-2524.
- We will mail tickets approximately two weeks before the High Holy Days. You can request tickets online at: <https://cbisd.org/worship/hhd5782/>
- Ticket requests received after Thursday, September 2 will be held at Will Call at the Solutions Table in the Price Family Courtyard. You may purchase tickets in the Price Family Courtyard the day of services at our Solutions Table. For security and scheduling purposes, we strongly recommend that you order your tickets in advance.
- We are pleased to offer Complimentary Adult and Youth Admission Tickets for active-duty military personnel & their dependents, full time college students through age 26, reciprocal requests, and guest tickets for members of the Ner Tamid Circle based on level.
- You may request reciprocal tickets for Reform congregations in other cities by contacting us at ewinchester@cbisd.org or (858) 900-2515.

CHILDREN'S PROGRAM/SERVICE

(Subject to change/cancellation based on health guidelines.) To enhance their High Holy Day experience, we are adding programming for our Kindergarten and 1st grade students. Programming (class, stories, art projects as well as exclusive children's services) will take place from 8:30 am - 10:30 am on the first day of Rosh Hashanah (Tuesday, September 7) and on Yom Kippur (Thursday, September 16). Participants will join the Family Service on Rosh Hashanah to hear the blowing of the shofar. Drop off and pick up will take place in the hallway of Room 200. Please complete and return the enclosed registration form to reserve a place for this program. If you have any questions, please contact Religious School Director Rose Orlovich, 858-900-2555, rorlovich@cbisd.org.

PARKING

Parking information, maps and directions will be included with your tickets. Parking will be available in the Gateway parking structure. There are two entrances on Towne Centre Drive. Please PARK ON THE LOWEST TWO LEVELS OF THE GARAGE. You will need to pull a parking ticket and validate it prior to leaving. Parking validation machines will be available at several locations as you exit services. For those with disabled parking placards, there is limited parking in Beth Israel's main parking lot off of Golden Haven Drive. Parking is not encouraged at the UTC Mall.



FORGIVENESS

in the TIME of COVID



by Rabbi
Cantor
Arlene
Bernstein

Every year, as Rosh Hodesh Elul approaches, the combined inward groan of the world Jewish population begins its rumble, searching for a way to manage the Jewish tradition of forgiveness as we approach the holy day of Yom Kippur. This year as Elul approached, the sound was decidedly different.

With so many lives lost to an enemy that knows no borders, no religions, no races, and no ages, I would like to believe that we as a people, a religion, and a civilization, along with our families of all religious and cultural traditions, have been changed.

Let me be clear, there is and always will be much for which to ask forgiveness and much to forgive. However, the manner with which we approach *teshuva* (turning, repentance) this year hopefully will take on a different tone.

What is it that Covid has done to us to rethink forgiveness – to redefine *teshuvah*?

We are **still** living in the midst of a pandemic and looking a new, highly infectious variant in the face. While eternally grateful for vaccinations, we still find ourselves trying to save those who are unable to get the vaccine, those who are too young to receive it and those who, for varying reasons, don't want to receive it. While we, in San Diego, are doing better than most communities, we cannot pretend this is all over.

A favorite Yiddish phrase of mine is *hob rachmonis*, have mercy! In my mind's ear, I hear my father saying it – often. It's not clear what was happening in those moments in our family, but the phrase has faded into a plea to God, *hob rachmonis ohn meine neshomeh*, have mercy on my soul. We all need to “have mercy” on ourselves – for how complicated the past year has been and continues to be.

Have mercy on yourself first, for allowing Covid and all of its complications to get the best of you – for not being able to keep up with family or friends, no matter the setting. Forgive yourself for the real fear imposed upon each of us by a deadly disease, by decisions made by professionals that had to change each and every day, and sometimes by the hour. Have mercy on yourself for the choices you made to the best of your ability, for hurting yourself or others knowingly or unknowingly due to lack of knowledge, inexperience, or perhaps by anger, mistrust,

or anxiety. Forgive yourself for what you were not able to achieve, or for the guilt you felt because while the world was falling apart, your life was good and your family safe.

And while we forgive ourselves first for all of these things and so much more, we need to forgive others for the same, even if they have not asked us for forgiveness.

Rabbi Lord Jonathan Sacks, *z”l*, of blessed memory, maintains that forgiveness, so essential in Jewish life, provides three important gifts: “... it allows one to mend a broken relationship; two, it gets rid of negative emotions which keeps our souls imprisoned and three, frees one from captivity to the past and allows one to begin again...”

While we are required genuinely to ask forgiveness up to three times from those we have hurt, our sage Maimonides says that we are always free to forgive, even if we are not asked for forgiveness. Harboring a grudge carries with it a heavy burden. **The past cannot be undone**, and it is our responsibility to do our best to let it go or to let it diminish over time. This letting go will benefit the forgiven and, even more so, the forgiver. Rabbi Sacks asks of us “to live with the past and not to live in the past.”

Jewish tradition obligates us to ask forgiveness from those we have hurt, and only then can we ask forgiveness from God. We are also required to pray and ask forgiveness for the sins of the community. We are and always have been our brothers' and sisters' keepers. This year, though, needs to be distinctive — altered in a way that will allow us to have compassion on ourselves, and to emulate God in showing kindness and mercy. If we are obligated to forgive others, we are also obligated to forgive ourselves. We are commanded to “love our neighbors as we love ourselves.” Forgiveness should not be dissimilar.

This year, from the moment the month of Elul begins, to the moment the shofar sounds its last blast at Ne'ilah, ending Yom Kippur, we need to use our time for reflection and *rachmonis*. When faced with a trauma such as Covid, or any of its future variants, we need to “have mercy” on ourselves and on each other and try to elevate the nature of our compassion. Forgiveness in the time of Covid should bring us all to pray for everyone to be written and sealed in the book of life.



BETH
ISRAEL'S

DOR L'DOR SOCIETY

Bob and Joyce Blumberg

WHY WE MADE A PLANNED GIFT TO BETH ISRAEL:

We moved to San Diego in 1973 from the East Coast and joined Beth Israel in 1974, at the Third and Laurel site, and we have been members ever since. Our two sons, Matt and Michael, became bar mitzvah at Beth Israel in 1983 and 1993. Having moved to La Jolla in 1987, we were excited to be closer to the synagogue's new and beautiful campus on Towne Center Drive.

Over the years, Bob served on the Board of Directors twice, for seven years in the late 1980s and early 1990s, and again for six

years in the 2000s to 2010s. He also served as Chair of the Membership Committee and of a Cantorial Search Committee.

We feel that the synagogue is the center of gravity of Jewish community life and have always supported it. That's why we have made a planned gift to Congregation Beth Israel in our Family Trust. We feel that the best way to ensure the continuation of this vital institution, and what it does to connect the Jewish community of San Diego, is to help build its endowment and to provide for changes in the future.

JOIN THE DOR L'DOR SOCIETY

The Dor l'Dor Society recognizes those families who have made a long-term commitment to Beth Israel through a planned gift. With a legacy gift, your generosity is extended beyond your lifetime and ensures that Beth Israel will be here for generations to come.

Beth Israel will be pleased to provide you, your financial advisor, or your attorney with additional information. Please contact:

Meg Mandel, Development Director
858-535-1111, ext. 2585 or mmandel@cbisd.org

*Support
Something
Special*

MAKE A GIFT
THROUGH YOUR
ESTATE THAT COSTS
NOTHING DURING
YOUR LIFETIME.

CONTACT
DEVELOPMENT DIRECTOR
MEG MANDEL
858-900-2585.



*may their
memory be for
a blessing*



Remember your loved ones on the
Memorial Wall or a Memorial Bench.

Order online at
www.cbisd.org/memorials or call
Katey Lindley at 858.900.2525

WELCOME NEW MEMBERS!



Zakary, Sonya and Avi Smith

Avi is actively participating in summer camp and part of the Bill & Sid Rubin Preschool. We are also looking forward to joining Shabbat and holiday services. We live in La Jolla. Zak loves surfing and mountain bike riding, Sonya is an incredible cook/baker and enjoys doing barre fitness, Avi loves to go swimming, run around at the beach and wrestle with our dog, Lily. A fun fact about our family is that all of our favorite ice cream is mint chocolate chip. We have a sincere appreciation for the teaching staff and how much love and energy they put into Avi's development. We became members as Zak's grandma Janet has been a long-time member and helped us get involved during COVID, as we moved here from Palo Alto and it was very tough to find a school/community.



Jessie, Stephen and Arlo Unterberg

We recently moved back to San Diego after being in London for two years where we were lucky to have Arlo just before COVID shut the world down. We are looking forward to experiencing the amazing care at the Bill & Sid Rubin Preschool, attending the summer outdoor Shabbat services, and reengaging with the Jewish community in San Diego. We live in South Park. We enjoy cooking and traveling. We love the great teachers at the preschool, and we are lucky enough to have had Rabbi Bernstein marry us, lead Jessie through conversion, and perform Arlo's baby naming (via Zoom during COVID).



Pnina and Bar-Giora Goldberg

We both grew up in Israel, Bar-Giora in a secular family but with a mighty influence of an Orthodox grandpa. He never belonged to a synagogue and decided that Reform is worthy of his style. Our purpose is to belong to a Jewish community, be involved in the cultural activities, and develop more personal relationships with members that share interests. We look forward to meeting more friends and becoming part of this blessed community. We love the fantastic campus, the friendly staff, and Torah study on Saturday mornings. Favorite interests include history, travel, music (classical and opera), and architecture. Pnina is an architect. We have two children and four young grandkids and reside in University City.



Marni Kulberg and Robert Kunselman

Marni grew up going to a Reform temple in Los Angeles and some of her favorite memories and best friends have come from that. When researching temples in San Diego, Beth Israel stood out in the sense that I think it will have that same experience for my family now and future kids. We are looking forward to meeting new people and being part of a Jewish community in San Diego. We love how welcoming everyone has already been at Beth Israel. We live in Chula Vista, and we have a small mini poodle named Olaf.



Alexandra Constantin, Matt Piven and Emma

Matt was raised in the Reform Baltimore Hebrew Congregation. Our seven-year-old daughter, Emma, is a rising second grader at La Jolla Country Day. We have lived in San Diego for three years, all within a five-minute walk from Beth Israel. Favorite hobbies include hiking, biking, swimming, and, recently, recording conversations for publication on Soundcloud.com. We are looking forward to religious school, High Holy Days services, and kid- and family-friendly programming. We decided to become members for several reasons: we want our seven-year-old daughter to start going to religious school. We are planning a baby naming/Simchat Bat ceremony in August with Rabbi Gimbel for our second child who is due in August, we love that it is a Reform temple, and it is close to home.



Rachel, Andrew, Madison and Aaron Albert

We are interested in meeting other families with children around our children's ages. We look forward to getting to know the community in general. We live in Carmel Valley (Torrey Hills area). We love to do family activities whether that be attending one of the kids sports games or performances, exploring new places here in San Diego and traveling (when that is possible). We enjoy the beach and being outdoors. We have a 14 year-old dog and are getting a new puppy soon and we are very passionate about our animals. We also love family movie night and a good New York style pizza. Rachel and Andrew lived in New York City together for 12 years and both kids were born there before we moved to San Diego. We love that Beth Israel is only 10 minutes away! We wanted to meet other Jewish families that lived closer to us.



Lauren and Dan Rossen

We moved from Chicago for Dan's position as Vice President for ICW Group Insurance Company. We live in Del Mar. We have three grown children. We love anything related to music and the arts, particularly classical music. Music has been a strong focus in our family's life. Our entire family was regularly involved in music at our former congregation, North Shore Congregation Israel, as vocalists and instrumentalists. Lauren has been involved in Jewish music and choirs in Chicago and New York and is looking forward to singing and playing violin at Beth Israel. Dan looks forward to playing drums and is eager to find a local garage band in need of a drummer. Lauren has an interest in Caring Community Committee having worked as a nurse educator supporting healthcare staff, nursing students, and patients. Dan is interested in Social Action. In addition to music and the arts, we enjoy tennis, pickleball, travel, ethnic cuisine, and exploring beaches and trails with our poodles. We love the warm feeling and vibrancy of Beth Israel. We look forward to getting involved in many activities.



Jerome L. Hall

I'm interested in community service. I have volunteered with Mama's Kitchen for the past seventeen years. This has really been my work-week mainstay and a wonderful way to welcome in Shabbat (I deliver food on Fridays). I enjoy traveling and plan to do more of it in retirement, both domestically and internationally. I love to read, exercise (walking, hiking, jogging, swimming, surfing), camp, and play the guitar. A fun fact about me: I can name all the books contained in the Tanach and Christian Greek scriptures ("New Testament") in a single breath and under 30 seconds! What I love about Beth Israel is the diversity of the rabbis – their education, background, life experiences, and instructional methods – and the discussions they evoke when teaching Torah. I've attended Beth Israel for nearly a decade and finally reached a point where I felt it was time to stop "taking" and start "contributing." I am thankful for the welcoming Beth Israel community and their spirit of acceptance.

OTHER NEW OR RETURNING MEMBERS NOT PICTURED:

Roy David
Robin and Ron Israel
Guillermo Moran-Arreola

Phyllis Perlroth
Marsha Reuther and Brett Heward
Sasha and Daniel Rietti

Laurie Sanford
Deb and Zvi Weiss



Belonging. Community. Partnership.

As Moses asked each individual to contribute toward building the tabernacle according to their own ability, we ask YOU to help sustain and support Beth Israel in a manner that is meaningful to YOU.



JENNIFER AND RICH LUTZ FAMILY We joined Beth Israel in 2000 – in advance of our October 2001 wedding. Beth Israel has been a part of all of our significant life cycle events – wedding, bris/baby naming, b'nai mitzvah, confirmation, High Holy Days, Jell-O shots in the parking lot to celebrate Purim. During Covid, Beth Israel remained critical for our family. We appreciated how David and Norah were able to keep meaningful connections with their Jewish friends and we enjoyed the continued Jewish presence via many Zoom services. David and Norah welcomed the in-person teen Shabbats led by Rabbi Nevarez in the spring of 2021. While we are elated for more upcoming in-person experiences, Beth Israel helped our family during the strange and difficult months of the pandemic.



THE REVAMPING OF Women of Beth Israel



The women's group at Beth Israel dates back to 1892 and was originally called the "Mothers Club." Mothers Club then became "Sisterhood", which hosted its first community seder in 1913 and became a vital part of the community by holding successful events and women's retreats. In 1996, Sisterhood became "The Women of Reform Judaism," and in 2000 the name changed to "Women of Beth Israel (WBI)." WBI provides ongoing programs and events, promoting friendship, contributing to scholarships, underwriting programs, and reaching out to the homeless through Rachel's House. After a hiatus, of a few years, Women of Beth Israel came back strong in 2019 and reimagined itself, focusing on Rosh Chodesh as a way to bring women together and create a sense of community.

MEET THE CO-PRESIDENTS



Marge Schane: My husband, Sanford, and I moved from Detroit to San Diego in 1965. We joined Beth Israel in 1968. Since then, I have celebrated my (adult) bat mitzvah, have served on several committees, helped start Caring Community, participated in the Leadership program, have been on the Beth Israel Board of Directors, and received the Volunteer of the Year Award. I was the Co-President of WBI previously and I was recently elected to serve as Co-President of WBI once again. We have two married daughters (who both became bat mitzvah, were confirmed, and married at Beth Israel) and two grandchildren who all live in San Diego. After retiring as a Probation officer, I became a travel professional specializing in luxury travel and have been in the industry for 16 years.

Julie Tedde: I joined Beth Israel in 2003, when my daughter started at the Lee & Frank Goldberg Family Religious School. I joined the Women of Beth Israel in 2011, serving as Treasurer. Working with Marge, we reinvigorated WBI in 2019, and this year I was elected Co-President. I have previously served on the boards of the Center for Jewish Culture, Lawrence Family Jewish Community Center, and BIPOC Support Foundation (serving as Treasurer/CFO). Professionally, I specialize in operations finance for public and private companies in the life sciences sector. Currently, I am the Associate Director, Manufacturing Finance for Halozyne, Inc.

WHY DID YOU DECIDE TO BRING BACK WOMEN OF BETH ISRAEL?

Marge: We really wanted to focus on reimagining ourselves, focusing on Rosh Chodesh events and bringing women together to create a sense of community, spirituality, friendship, fundraising events, speakers, as well as reaching out to the San Diego Community.

Julie: I remember attending my first kick-off cooking event for WBI and being so excited to be in a warm, welcoming room full of women. I am a single mom and having this type of community was so important to me. I started hearing from other Beth Israel members that they were missing and wanting this same thing, so I knew that I had to help re-establish WBI to provide this much needed outlet.

WHERE DO YOU SEE WBI GOING IN THE NEXT FEW YEARS?

Marge: I see WBI getting stronger by bringing women together in friendship and spirituality,

contributing to the community, and having fantastic Rosh Chodesh events.

Julie: We decided to start with Rosh Chodesh events during the pandemic to provide a space for women to get together and share their experiences and feelings. As we continue to grow, I would like to keep the Rosh Chodesh celebrations and add in some other events (see below) to help foster our community and reach out to others who may want to connect through other formats.

CAN YOU TELL US ABOUT FUTURE PLANS, EVENTS? WILL YOU BE BRINGING BACK ANY OLD PROGRAMS (SUCH AS LATKES AND VODKAS, AND A WOMEN'S SEDER)?

Marge: Our plan is to continue to have wonderful Rosh Chodesh speakers, via Zoom or in person, Rosh Chodesh Shabbat services, perhaps a women's retreat, and something is in the works for Chanukah and Passover as a fundraising event. Also, we have been working on a special fundraiser for this October.

Julie: There have been a lot of requests to bring back Latkes and Vodka's and the Women's Seder, so those are high on our list. We want to have some different types of events so that we can try to appeal to everyone in the congregation. We have also discussed doing some combined events with other Temple programs.

ANYTHING ELSE YOU WOULD LIKE TO ADD?

Marge: Women of Beth Israel has a no dues policy. Any member of the Beth Israel community who identifies as female is a member of Women of Beth Israel.

Julie: We are so honored that you chose to highlight WBI and we are so excited to be back as strong as ever!!!



WBI Board from left to right: Back row: Staci Tiras Jones, Ellen Edwards, Joani Gross, Ronni Udoff, Joanne Gimbel, Lynn Sampson
Front Row: Sari Hartman, Beth Tabor, Janet Perlman, Julie Tedde, Marge Schane, Bonnie Graff, Stephanie Rubin, Treger Strassberg
Not pictured: Candace Berkman, Valerie Leman and Haydee Ojeda

Beth Israel

September-November 2021

We are now offering diverse access for many programs, but will continue to offer streaming/Zoom for those unable to join us in-person

WORSHIP SCHEDULE

Friday, September 3

6:15 p.m. Erev Shabbat Elul Service

Saturday, September 4

Torah Portion: N'tzavim, Deut. 29:9-30:20, Haftarah: Isaiah 61:10-63:9

9:00 a.m. Torah Study; Leader:

Rabbi Bohm

10:30 a.m. Shabbat Lay Led Service

For High Holy Days Schedule, see page 4

Friday, September 10

6:15 p.m. Shabbat Shuva Service

Saturday, September 11

Torah Portion: Vayeilech, Deut. 31:1-30

Haftarah: Hosea 14:2-10; Micah 7:18-20, Joel 2:15-27

9:00 a.m. Torah Study; Leader:

Rabbi Graubart

10:30 a.m. Shabbat Lay Led Service

Friday, September 17

6:15 p.m. Erev Shabbat Service

Saturday, September 18

Torah Portion: Ha'azinu, Deut. 32:1-32:52, Haftarah: 2 Samuel 22:1-51

9:00 a.m. Torah Study; Leader:

Rabbi Nevarez

10:30 a.m. Shabbat Lay Led Service

Saturday, September 25

Torah Portion: Shabbat Chol

Hamoeid Sukkot, Exod. 33:12-34:26, Haftarah: Ezek. 38:18-39:16

9:00 a.m. Torah Study; Leader:

Rabbi Gimbel

10:30 a.m. Shabbat Lay Led Service

Friday, October 1

5:00 p.m. Tot Shabbat Service

6:15 p.m. Erev Shabbat Service

Saturday, October 2

Torah Portion: B'reishit, Gen. 1:1-6:8, Haftarah: Isaiah 42:5-43:10

9:00 a.m. Torah Study; Leader:

Rabbi Lawson

10:00 a.m. The congregation

celebrates a bar mitzvah

10:30 a.m. Shabbat Lay Led Service

4:00 p.m. The congregation

celebrates a bat mitzvah

Friday, October 8

6:15 p.m. Erev Shabbat Family

Service

8:30 p.m. Late service in Foster

Family Chapel

Saturday, October 9

Torah Portion: Noach, Gen. 6:9-11:32, Haftarah: Isaiah 54:1-55:5

9:00 a.m. Torah Study; Leader:

Rabbi Berk

10:00 a.m. The congregation

celebrates a bar mitzvah

10:30 a.m. Shabbat Lay Led Service

4:00 p.m. The congregation

celebrates a bat mitzvah

Friday, October 15

6:15 p.m. Erev Shabbat Service

Saturday, October 16

Torah Portion: Lech L'cha, Gen. 12:1-17:27, Haftarah: Isaiah 40:27-41:16

9:00 a.m. Torah Study; Leader:

Rabbi Nevarez

10:30 a.m. Shabbat Lay Led Service

4:00 p.m. The congregation

celebrates a bar mitzvah

Friday, October 22

6:15 p.m. Erev Shabbat Service

(Shabbat San Diego)

Saturday, October 23

Torah Portion: Vayeira, Gen. 18:1-22:24, Haftarah: 2 Kings 4:1-37

9:00 a.m. Torah Study; Leader:

Rabbi Gimbel

10:00 a.m. The congregation

celebrates a bat mitzvah

10:30 a.m. Shabbat Lay Led Service

Friday, October 29

6:15 p.m. Erev Shabbat Chai Service

Saturday, October 30

Torah Portion: Chayei Sarah, Gen. 32:1-25:18, Haftarah: 1 Kings 1:1-31

9:00 a.m. Torah Study; Leader:

Rabbi Lawson

10:00 a.m. The congregation

celebrates a bat mitzvah

10:30 a.m. Shabbat Lay Led Service

4:00 p.m. The congregation

celebrates a bat mitzvah

Friday, November 5

5:00 p.m. Tot Shabbat Service

6:15 p.m. Erev Shabbat Service

Saturday, November 6

Torah Portion: Tol'dot, Gen. 25:19-28:9, Haftarah: Malachi 1:1-2:7

9:00 a.m. Torah Study; Leader:

Rabbi Graubart

10:00 a.m. The congregation

celebrates a bat mitzvah

10:30 a.m. Shabbat Lay Led Service

Friday, November 12

6:15 p.m. Erev Shabbat Service and

Installation of Rabbi Nevarez

Saturday, November 13

Torah Portion: Vayeitzei, Gen. 28:10-32:3, Haftarah: Hosea 12:13-14:10

9:00 a.m. Torah Study; Leader:

Rabbi Nevarez

10:30 a.m. Shabbat Lay Led Service

4:00 p.m. The congregation

celebrates a bat mitzvah

Sunday, November 14

4:00 p.m. Thanksgiving Interfaith

Service & Service Project

Friday, November 19

6:15 p.m. Erev Shabbat Service

Saturday, November 20

Torah Portion: Vayishlach, Gen. 32:4-36:43, Haftarah: Hosea 11:7-12:12

9:00 a.m. Torah Study; Leader:

Rabbi Gimbel

10:00 a.m. The congregation

celebrates a bar mitzvah

10:30 a.m. Shabbat Lay Led Service

Friday, November 26

6:15 p.m. Erev Shabbat Chai Service

Saturday, November 27

Torah Portion: Vayeishev, Gen. 37:1-40:23, Haftarah: Amos 2:6-3:8

9:00 a.m. Torah Study; Leader:

Rabbi Graubart

10:30 a.m. Shabbat Lay Led Service

Beth Israel

September - November 2021

ADULT EDUCATION

Visit us at www.cbisd.org/adults/adulteducation or contact Program Director Ilene Tatro, itatro@cbisd.org, 858 900-2516

Morning Mindfulness with Julie Potiker
Wednesdays @ 10:00 am - 10:40 am

"Jews in the American Theater" led by John Kenrick
Monday, October 4 @ 10:00 am

Adult B'nai Mitzvah
Starts Friday, October 14

People of the Book with Dr. Joellyn Zollman
Monday, October 18 @ 10:00 am - 11:00 am

From Rajisthan to the World, the History and Culture of the Roma" with Yale Strom
Mon., November 1, 8, 15, and 22 @ 10:00 am - 11:00 am

DAYTIMERS

Visit us at www.cbisd.org/adults/daytimers or contact Program Director Ilene Tatro, itatro@cbisd.org, 858 900-2516

DayTimers Book Club
Tuesday, October 5 & December 7 @ 1:00 pm - 2:30 pm

DayTimers Movie Mavens
Thursday, September 2 @ 1:30 pm - 2:30 pm

DayTimers Speaker Series
Thursday, October 21 & November 18 @ 1:30 pm - 2:30 pm

SOCIAL ACTION

Visit us at www.cbisd.org/getinvolved/socialaction or contact Program Director Ilene Tatro, itatro@cbisd.org, 858 900-2516

Volunteer at Rachel's Women's Center
Sunday, October 10 @ 4:15 pm

Mama's Kitchen Collection
November 2021

WOMEN OF BETH ISRAEL

Visit us www.cbisd.org/getinvolved/wbi

Rosh Chodesh Cheshvan
Wednesday, October 6 @ 7:00 pm - 8:00 pm

Rosh Chodesh Kislev
Thursday, November 4 @ 7:00 pm - 8:00 pm

MEN'S CLUB

Visit us at www.cbisd.org/getinvolved/mensclub. For information contact cbimensclub@gmail.com

Discussion Group
Monday, September 13 & 27, October 11 & 25, November 8 & 22 @ 10:00 am - 11:30 am

Men's Club Monthly Forum
Wednesday, October 20 & November 17 @ 7:00 pm - 8:00 pm

CARING COMMUNITY

Visit us at www.cbisd.org/getinvolved/caring-community or contact Katey Lindley at klindley@cbisd.org, 858 900-2519

Shavua Tov Cafe
Every Monday @ 10:00 am - 10:30 am

Fill the Freezer Challah Bake
Thursday, September 2 @ 7:00 pm

What's Jewish About Breast Cancer?
Tuesday, October 19 @ 10:30 AM

TRIBE

Visit us at <https://cbisd.org/getinvolved/tribe/> or contact Program Director Ilene Tatro, itatro@cbisd.org, 858 900-2516

TRIBE Oneg
September 24, October 22 and November 19

MEMBERSHIP & ENGAGEMENT

Visit us at www.cbisd.org/adults/new-judaism or contact Program Director Ilene Tatro, itatro@cbisd.org, 858 900-2516

Intro to Judaism
Starts Friday, October 7

SPECIAL EVENTS

www.cbisd.org/programs/category/special

Interfaith Thanksgiving
November 14, 4:00 p.m. Service followed by joint service project

Sukkot Shabbat/New Member Shabbat
Friday, September 24

ISRAEL CONNECTION

Visit us at www.cbisd.org/media/israel or contact Program Director Ilene Tatro, itatro@cbisd.org, 858 900-2516

Meet the USD-Azrieli Student Collaboration Team
Monday, September 13 @ 4:00 pm - 6:30 pm

Your "Shtisel" Questions Answered with Creator Ori Elon!
Sunday, October 17 @ 5:00 pm - 7:00 pm

Stay up to date on Israel events at <https://cbisd.org/media/israel/>

LEE AND FRANK GOLDBERG FAMILY RELIGIOUS SCHOOL

Visit us at www.cbisd.org/youth/religiouschool/upcoming-events/ or contact Director of Education Rose Orlovich, rorlovich@cbisd.org, 858 900 2555

First day of School

Sunday, September 12 Pre-Kindergarten-6th Grade

Tuesday, September 28 7th - 12th grade classes

YOUTH GROUPS

Visit us at www.cbisd.org/youth/youth-programs/events or contact Becca Myers at bmyers@cbisd.org, 858 900-2556

FAMILY ACTIVITIES- EARLY CHILDHOOD EDUCATION BILL & SID RUBIN PRESCHOOL

Visit us at www.cbisd.org/youth/earlychildhood, or contact the Director of Early Childhood Education Cathy Goldberg, cgoldberg@cbisd.org, 858 900-2533

HUNGER PROJECT

2nd through 5th Sunday of every month, 8:30-11:30 am

For more info visit:

www.cbisd.org/getinvolved/hungerproject

ENCORE: BABY BOOMERS & BEYOND

Visit us at www.cbisd.org/getinvolved/encore or contact Katey Lindley at klindley@cbisd.org, 858 900-2525



It **PAYS**
to **GIVE**

THIS YEAR - 2021 - is an exceptional year to provide financial support to the charities and nonprofits you care about most. Congregation Beth Israel serves an important role in the San Diego community and has continued to fulfill its mission of spiritual enrichment, community support, and social action during these highly uncertain economic times.

It is through your support — annual membership commitments and other contributions — that Beth Israel remains financially strong. There are a variety of ways to direct your gift to make a difference at Beth Israel. For example:

- A contribution to the Beth Israel Fund provides general support and can be used where needed most.
- Consider a donation to the Building Fund to help maintain the appearance and safety of our beautiful campus.
- Provide for the synagogue's long-term financial strength with a gift to our endowment.

Currently, financial asset values (i.e., stocks, real estate, private businesses) and the potential tax benefits for charitable donations are both at or near record highs. Here are a just a few examples:

- You could offset 100% of your adjusted gross income (AGI) on your 2021 tax return for cash donations.
- You could donate a highly appreciated, long-term (held over 1 year) asset to avoid generating capital gains taxes and offset 30% of your 2021 AGI, with the ability to carry

forward the remaining deduction for five years on amounts in excess of this limit.

- You could donate a "complex asset" like private company stock (S-Corp, C-Corp, LLC and LP) investments to a donor advised fund (DAF) that can hold it before it sells to maximize both your charitable impact and potential tax savings.

"This would be a great year to maximize your financial impact and redouble your philanthropy. Don't look back next tax season with regret if the IRS receives more of your financial support than the charities like Beth Israel who are working to improve our community every day," says Board member and Finance Committee member Ryan Goldenhar, CFA, CFP.

Your situation is unique, and you should make sure to discuss your particular circumstances with your tax, legal, and financial advisors. To explore how Beth Israel can help you make a lasting, positive impact and enhance your family's legacy in the San Diego Jewish community, please reach out to Meg Mandel, Development Director, mmandel@cbisd.org or 858.900.2585.



14 FALL 2021 / 5782



INSTALLATION

**NOV 12,
2021**

**Join us for the
Installation of
Senior Rabbi
Jason Nevarez**

**November 12
@ 6:15 pm**

Special Installation service with
guest speaker Rev. Paul Alcorn,
Pastor Emeritus of Bedford
Presbyterian Church in New York

Upscale festive oneg
following services, open to all

 **BETH ISRAEL**

Q & A WITH BETH ISRAEL MEMBERS

JUDY HOROWITZ-GLENN & GORDON GLENN



Can you tell us a bit about yourselves and your background?

Gordon: I grew up in Alhambra, CA, from kindergarten through the end of law school. I worked at Sears, Henry's Camera, Kelly Services, Dun & Bradstreet, Jacoby & Meyers, Cadwell & Glenn, and as a sole practitioner and notary public.

Judy: I am a native San Diegan. My mother, Charlotte Horowitz, was born in Germany. When my mother was about 11, she, her sister, and their parents were fortunate to escape Germany not long after Kristallnacht. They came to the United States by way of Brazil and, eventually, ended up in San Diego. For many years, I was an auditor for the State of California. After my grandfather passed away, I helped my grandmother manage her rental properties.

We have two daughters, Sabrina and Juliana (Annie). We met at a singles event at Beth Israel in the Social Hall at 3rd and Laurel!

What role does Judaism play in your family life?

Gordon: I grew up in an ethnically, but non-practicing, Jewish family. I never attended Hebrew School, and other than as guests at other relatives' bar/bat mitzvah celebrations, my parents, sisters and I only went to synagogue a couple of times.

Judy: My family and I attended Tifereth Israel, a Conservative temple, on a regular basis and very much followed Jewish traditions.

We wanted to make sure our daughters had a good Jewish education. We invested in their education by sending them to Beth Israel Day School and, during the summer, we sent them to Camp Alonim in Simi Valley. They built many friendships from these experiences. Once our children started attending Beth Israel Day School, we participated in the Adult B'nai Mitzvah program, which included a course in Basic Judaism as a prerequisite. Another requirement was attending the Minyan service a couple of times. Of course, a couple of times has turned into a couple of decades and more! Our Saturday mornings begin with bagels and Torah Study, followed by the Minyan service.

How important is being a part of a congregation for you and your family?

We have no relatives in San Diego and our daughters live out of town, so the friendships and associations we have developed at Beth Israel, clergy and lay, both at services and with our chavurah, have provided us with the emotional and intellectual support that we need.

What do you love about Beth Israel and what keeps you connected to Beth Israel?

The people, the people, the people!

How do you stay involved?

Gordon: I have been a volunteer for many years, mainly as a coordinator of the lay led Minyan service. With the help of Elissa Shuchter, a fellow coordinator, I send out the weekly blast keeping people informed of what is coming up with the Minyan. We have many wonderful people who volunteer to be a service leader, Torah reader, and present a drash (D'var Torah) on a weekly basis. I also lead services, read Torah, and have written many drashot.

Judy: For many years, I was actively involved with Beth Israel, helping on various committees or in the classrooms when our children were going to BIDS. I have attended Torah Study and Minyan with Gordon for many years, have chanted Torah at Minyan, and both of us participate with our Chavurah "Shabbat."

Has being part of Beth Israel during this past year and a half been more important than before the pandemic?

Gordon: Yes, in an unexpected way. If you have been attending either the Zoom virtual Torah study or the Lay led Shabbat Minyan service on Shabbat mornings, you will know me as the host for the Zoom sessions, making sure that things go smoothly. It's important to stay in touch with those you care about. With social distancing the norm for such a long time, even an hour or two a week of joint virtual activities keeps your spirit up and hopeful that things will get better.

What might people be surprised to learn about you and your family?

Gordon: I am a regular blood donor. I am working on my sixth gallon. During the pandemic, I resurrected my home darkroom and film-based photography. With few exceptions, we walk a 4.5-mile route every day that takes about 1.5 hours to complete.

As long-time members, what are some of the most significant changes you have seen at Beth Israel over the years?

The move from 3rd and Laurel to Towne Centre Drive is right up there. Moving the High Holy Days services to Beth Israel from the Civic Center was a big change. Another change is not having a day school anymore, which we have fond memories of as both our daughters attended BIDS and made lifelong friends at BIDS.

What have you been involved in at Beth Israel over the years?

We were on the Festivals Committee and ALEINU (Adult Education). For a time, Beth Israel had its own Jewish Film Festival and Gordon was on that committee. We have a real popcorn machine and would bring it to the Social Hall and provide freshly popped corn. As mentioned above, Gordon has been one of the Minyan coordinators continuously for over two decades. We also have been members of the Shabbat Chavurah for several years now.

What advice would you give to new members?

Almost any question that a new member has can be answered by going to www.cbisd.org. Beth Israel has a marvelous team that keeps the website continuously updated with information about upcoming events, worship, just everything. Besides the wonderful staff, the lay leadership is second to none.

Anything else that you'd like to add that you would want the congregation to know?

Be sure to validate your parking receipt before returning to your car!

Mazal Tov TO OUR BAR & BAT MITZVAHS



BERT DRUMMOND
October 2

Bert is the son of Frank and Laura Drummond, the grandson of Ellen Benkle and Marshall and Beth Nadel, and the great-grandson of Lynn and Bert (z"l) Epstein. He attends Francis Parker School. Bert's hobbies include basketball, flag football, baseball, playing video games, and collecting sports cards. Bert has a special connection to Beth Israel as his great-great-grandfather, Henry Weinberger, was a founding member of the temple, his grandmother Ellen was confirmed here, and his father, Frank, was bar mitzvah and confirmed here as well. He is proud and honored to follow in their footsteps. Helping San Diego's elderly community will be the focus of Bert's mitzvah project.



ABIGAIL ALVAREZ-MILCH
October 23

Abigail is the daughter of Sarah Milch and Cesareo Alvarez and the granddaughter of Estelle and Jim Milch and Cesareo and Maria Alvarez. She attends High Tech Middle School. For her mitzvah project, Abby collected numerous supplies from many generous people in the San Diego community and packed and handed out 500 Blessing Bags (toiletory kits) to the homeless. Abby likes to play basketball and ride her bike and scooter with her friends at the Clairemont Skatepark.



LEO SICKLICK
November 20

Leo is the son of Danielle and Dr. Jason Sicklick and the grandson of George and Bernice Sicklick and Dr. Alan and Elisabeth Sandler. He attends Francis Parker Middle School. Leo's favorite hobbies are soccer, baking, and making people laugh.

Mazal Tov TO OUR BABY NAMINGS

Grandparents Lisa Braun Glazer and Jeff Glazer on the birth of their grandchild, Jordan Sable Scher, and to his parents, Julie Glazer Scher and Mark Scher

& WEDDINGS

Grandparents Lee & Frank Goldberg and parents Suzi and Bernie Feldman, on the marriage of David Feldman and Pauli Faktor

B'NAI MITZVAH

October - November 2021

Bert Drummond, October 2
Abigail Weisman, October 2
Gabriel Skolnick, October 9
Allegra Grezemkovsky, October 9
Toby Litman, October 16
Abigail Alvarez-Milch, October 23
Lena Gopen, October 30
Lily Bellowe, October 30
Addison Wilensky, November 6
Brooke Epstein, November 13
Leo Sicklick, November 20



ABIGAIL WEISMAN
October 2

Abigail is the daughter of Heather and Michael Weisman and the granddaughter of Marlene and Sanford Pleskow and Sheila and Donald (z"l) Weisman. She attends Oak Valley Middle School. During Abigail's free time she enjoys playing tennis, performing piano, writing music, reading books, creating arts and crafts, traveling, and spending time with family and friends.



LILY BELLOWE
October 30

Lily is the daughter of Margaret and Gary Bellowe and the granddaughter of Natalie Sweet and Arthur (z"l) Sweet, Stanley and Brenda Bellowe, and Shirley Bellowe Century, z"l. Lily attends Carmel Valley Middle School. She loves cheer, swimming, going to the beach with friends, summer camp, theater, acting, and travel.



ALLEGRA GREZEMKOVSKY
October 9

Allegra is the daughter of Claire Grezemkovsky, Uriel Grezemkovsky, and Perry Kirkland. She is the granddaughter of Bernardo and Graciela Grezemkovsky, Susan Kirkland, Theo and Grace Kirkland, and Bill and Cecelia Tichi. Allegra attends La Jolla Country Day School, and her favorite hobbies are surfing and softball.



LENA GOPEN
October 30

Lena is the daughter of Jaimee and Josh Gopen and the granddaughter of Susan and Jan Aiken and Arlene and Charles Gopen. She attends Meadowbrook Middle School. Her hobbies include drawing, bicycling, going to the beach, music, and soccer.

MEET *your* BOARD MEMBERS & COMMUNITY VOLUNTEERS



RYAN GOLDENHAR *Board Member*

Ryan Goldenhar and his wife, Rachel Milstein Goldenhar, joined Beth Israel in 2008 when they enrolled their kids in the Bill & Sid Rubin Preschool; the children later attended Beth Israel's religious school. Ryan began his wealth management career in San Diego in 2000, first teaching securities law and regulations to financial professionals and eventually advising high net worth clients at Merrill Lynch and Wells Fargo's Private Bank. He is currently a partner advisor in Del Mar with Century City-based AdvicePeriod.

Growing up in Los Angeles, Ryan received his bachelor's degree from California State University, Northridge, and his master's degree from the University of Southern California. Additionally, he is a Chartered Financial Analyst (CFA) charter holder and Certified Financial Planner (CFP). He also serves as the Audit Committee chair for Jewish Family Services of San Diego.

When not working and volunteering in the community, Ryan enjoys spending time with his wife and kids (and new puppy) exploring San Diego, reading, traveling, and cooking. This summer was particularly busy as the family planned and celebrated their daughter becoming a bat mitzvah.



VALERIE LEMAN *Community Volunteer*

My husband, Ross Cohen, and I moved to San Diego in 1981 and soon joined Beth Israel. We were part of the Orlanu Chavurah and made some great friends along the way. Our son and daughter attended religious school here, and now they both work in humanitarian aid. I was a research attorney and worked for the California court system for 37 years. Both my husband, a physics instructor, and I retired recently.

I joined Women of Beth Israel, formerly known as Sisterhood, soon after joining Beth Israel. During this time, WBI heard about a way to help homeless women, by bringing meals to Rachel's Women's Center. My friends were among the dedicated volunteers who signed up to bring meals once a month (which became once every other month in more recent years) on Sunday evenings to feed around 25-30 clients and the two staff members on duty. I got interested in the project because I enjoyed participating in the Hunger Project at St. Vincent de Paul with my then-teenage son and daughter. My parents in Oregon were always involved in food charities, and here in San Diego, I learned that volunteering is a good way to get to know like-minded people in our rather large congregation.

One Christmas Day while volunteering at the Center, I was talking to a young woman there who told me, "I didn't think I'd be able to smile today, but you made me smile." Needless to say, that was very rewarding. Lately, due to COVID-19, we have not been able to serve the food we make to the women; instead, we cook at home and deliver our meals to the Center. We also try to make holidays special for the women at Rachel's Women's Center by buying and collecting supplies and distributing bags of toiletries and small gifts to each of the residents.

WBI is always looking for volunteers. To volunteer at Rachel's Women's House, visit <https://cbisd.org/programs/volunteer-at-rachels-womens-center-2/all>.



Save the Date for

SHABBAT SAN DIEGO 2021/5782!

OCTOBER 21 - 24, 2021



CHALLAH BAKE
Thursday, October 21



SHABBAT MEALS
Friday, October 22 &
Saturday, October 23



UNITY HAVDALAH CELEBRATION
October 23



COMMUNITY DAY OF LEARNING
6th Annual Tapestry:
A Community Celebration
of Jewish Learning
October 24

Contributions

We acknowledge these contributions, processed through July 15, with appreciation. To make a contribution email giving@cbisd.org, or call Mila Vasser at 858 900-2524

RABBI NEVAREZ' FUND

In appreciation of:

Rabbi Nevarez for the unveiling service for Geoffrey Bergman by Vicky Bergman

Rabbi Nevarez' caring and kindness

during her illness by Shirley Deckelboim

Rabbi Nevarez' visit with her father by Ellen and Larry Edwards

Simon Kassas' bar mitzvah by Carol and Ron Fox

Rabbi Nevarez, the Caring Community, and CBI in memory of Arthur Goldfarb by Sheryl Rowling

In honor of:

Max Brown's bar mitzvah by Andrea and Larry Oster

Ryan Krause's bar mitzvah by the Krause Family

The baby naming of Halliday Walker by Elizabeth and Barry Hirsch

Marlo and Michael Willows' wedding anniversary by Joe and Sally Nalven

In memory of:

Doris Bennett by Allan Bennett

Gertrude Edwards by Ellen and Larry Edwards

Bessie Gelbtuch by Vicki and Howie Gelbtuch

Mildred Newberger by Lynn and Michael Maskin

Morton Newberger by Lynn and Michael Maskin

Israel Nourok by David and Marlene Nourok

RABBI BERNSTEIN'S FUND

In appreciation of:

Simon Kassas' bar mitzvah by Carol and Ron Fox

The unveiling ceremony for Janet Scharaga by Hermeen Scharaga and Family

In honor of:

The bris for Miles Bonner by Stuart Rubenstein

Max Brown's bar mitzvah by Andrea and Larry Oster

Ryan Krause's bar mitzvah by the Krause Family

David and Polly Feldman's wedding by Suzi and Bernie Feldman, Mary Ann and George Scher

In memory of:

Daniel Adelson by the Adelson-Rodriguez Family

Doris Cahn by Polly and Richard Wolf

Stuart Cahn by Polly and Richard Wolf

Raymond Jeremy Carmel by Nurit Carmel, Turken and Cohen Families

Sigrid Fischer by the Morris Family

Hyman Glaser by Lisa and Dale Glaser

Lois Hazan by Nancy and Marty Goldberg

Joanne M. Klein by Kathy and David Marsh

Harry Babe Levin by Steven and Heidi Levin

Jim Lieberman by Dorian Polson

Helen F. Marsh by Kathy and David Marsh

Renee T. O'Rourke by Robin Edwards and Family

Janet Peckarsky by Polly and Richard Wolf

Benjamin Pearl by David Geffen

John Stanley Samuels by the Haubrich Family

Abraham Shelley by Naomi and Myron Shelley

Selma Tennebaum by Stephanie and Michael Heinzman

Ralph Watts by Polly and Richard Wolf

Charley Philip Weiss by Audrey Weiss and Family

Daniel Weiser by Stefanie Levine and Michael Breslauer

Hal Wingard by Eileen Wingard

Alyce Wolf by Polly and Richard Wolf

Leonard Wolf by Polly and Richard Wolf

RABBI GIMBEL'S FUND

In appreciation of:

Simon Kassas' bar mitzvah by Carol and Ron Fox

In honor of:

The High Holy Days by Janice Alper

Ryan Krause's bar mitzvah by the Krause Family

In memory of:

Mervin Cooper by Dale and Gerald Spector

Adrienne Gimbel by Joanne and Ken Gimbel

Charles Ginsberg by Robert Ginsberg

CANTOR MEREL'S z"l MUSIC FUND

In memory of:

Lenore Lebolt by Nancy and Steven Deutsch

Cantor Sheldon Merel by Beverly and Leonard Bernstein, Phyllis Cohn, Janet and John Perlman

BETH ISRAEL

In appreciation of:

Scott Lyons by Holly and Derek Wong

Contribution by:

Susan Batel

Joellyn and Ron Zollman

In honor of:

Heidi Gantwerk and Andy Mayer, in recognition of their musical contribution to Beth Israel, by Isabel Rose and Jeff Fagen

In memory of:

Irving Berson by Joan and Peter Winokur

Natalye Sue Black by Laurie Black

Joseph Bronstein by Terri Bignell

Jerome Chapin by Ronni and Eric Udoff

Irving Clamage by Barbara and Richard Cohen

Jean Clamage by Barbara and Richard Cohen

Rose Deitel by Paula Park

Julius Dudock by Judy Levine

Rimma Felty by Ilene and Michael Tatso

Sigrid Fischer by Sylvia and David Geffen

Irving Gold by Andrea and Russ Gold

Jeanette Goldberg by Linda and Jerry Goldberg

Arthur Goldfarb by Irma and Philip Ames, Jeremy Pearl

Edwin Goldfarb by Doris and Irv Goldfarb

Herbert L. Gordon by Herbert Solomon

Mary Gordon by Herbert Solomon

Ronald Gordon by Lynn and Dick Gordon

Arthur Greenberg by Sharon Gorevitz and Alan Greenberg

Francis Greenberg by Sharon Gorevitz and Alan Greenberg

Milton Hartman by Anne and Ronald Simon

Randi Helsel by Lisa and Chuck Helsel

Vina Keaton by Nancy and Alan Nevin

Marcia Nevin Lawrence by Nancy and Alan Nevin

Ellen Levine by Ira Levine

Joseph Mayer by Heidi Gantwerk and Andy Mayer

Morris Nevin by Nancy and Alan Nevin

Nettie A. Nevin by Nancy and Alan Nevin

Joseph Oppenheimer by Margaret Oppenheimer

Edward Earl Parker by Barbara Parker and Geoff Wahl

Vernon Petler by Charles Petler and Randy Savarese

Louis Rosenwald by Joan and Roy Rosenwald

Jeff Sampson by Lynn Sampson

Randy Sampson by Lynn Sampson

Morris Sedloff by Janice and Michael Sedloff

Marc Sheinbein by Fred and Judy Sheinbein

Rose Snyder by Maxine Snyder

Elene Solomon by Herbert Solomon

Bernice Spevack by Janice and Michael Sedloff

Marilyn Stern by Melvin Stern

Harriet Kaplan Turberg by Susan Resnik

Melvin Udoff by Ronni and Eric Udoff

Jeanne Wohlander by Kirby Wohlander

Arthur Wright by Terri Bignell

BILL AND SID RUBIN PRESCHOOL

In memory of:

Bill Rubin by Neal Rubin, Helene and Allan Ziman

ADULT LEARNERS NETWORK

In memory of:

Michael Abelon by Nancy and Dean Abelon

CAMPERSHIP

In honor of:

Liora Krantz on her 17th birthday by Heidi and Stuart Krantz

In memory of:

Blanche Brown by Janice, Jay, Stuart and Ross Schuffman

CARING COMMUNITY

Contribution by:

Anonymous, Nancy and Dean Abelon, Renee Barnow, Deborah and Daniel Carnick, Bethany and Michael Eisenberg, Stephanie and Michael Epstein, David Estrin, Jean Feinstein, Susan and Bernie Feldman, April and Mathew Fink, Rachelle and Adam Fischer, Debra Frischer, Heidi Gantwerk and Andy Mayer, Sarah Garrick, Sue and Jackie Geller, Deborah and Marcus Gerber, Joanne and Ken Gimbel, Francine and Phillip Ginsburg, Eileen Glasser Wesley and Mark Wesley, Cathy Goldberg, Linda and Jerry Goldberg, Rachel and Ryan Goldenhar, Bonnie and Barry Graff, Ellen and Herb Hafter, Judith Hahn, Julie and Howard Haimsohn, Sari and Sean Hartman, Marcia Hazan and Mark Cammell, Tracy and Gary Hirschfeld, Sonia Israel, Heather and Brandon Keith, Joy and Jeff Kirsch, Ava and Michael Kurnow, Robin and Joth Layton, Angela and John Lefter, Valerie Leman and Ross Cohen, Heidi and Steven Levin, Audrey and Steve Levine, Meg and Jess Mandel, Lesley Mills and James Macindoe, Tricia and Troy Morrison, Nicole and Rabbi Jason Nevarez, Johanna and Jonathan Newlander, Linda and Larry Okmin, Rose Orlovich and Daniel Ir, Jeanette and David Osias, Katherine Paculba Lacher, Janet and John Perlman, Lorne Polger, Shira Robbins and Peter Durdaller, Sheryl and William Rowling, Mary Ann and George Scher, Helene and David Schlafman, Molly Schneider, Cindy and Wayne Schwartz, Karen Foster Silberman and Jeff Silberman, Sheri and Steven Spector, Julie Tedde, Staci Tiras-Jones and Dan Jones, Ronni and Eric Udoff, Tammy and Louie Vener, Diane and Buddy Voit, Susan and Ed Weiner, Lillian and Robin Weiner, Rachel and Adam Welland, Helene and Allan Ziman

In appreciation of:

Meg Mandel and the Spring Forward Gala by Kaylee and Dan Brogadir

In memory of:

Paula Fidler by Shelley Druskin
Lori Gilbert-Kaye by Ellen and Larry Edwards
Nathan Ginsburg by Martin Stern
Sadie Goldman by Rachelle and Adam Fischer
Lois Hazan by Holly and David Hazan
David Hersh by Roxanne Hersh

Lorraine Kurnow by Ava and Michael Kurnow

Bernys S. Nierman Levin by Deborah Horwitz and Paul Nierman

Saima Zbikowski by Nancy and Dean Abelon

DAYTIMERS

In memory of:

Marty Bacow by Simma and Paul Nemeth

Harold Lasher by Lynn Lasher

Louis Nemeth by Simma and Paul Nemeth

HUNGER PROJECT

Contribution by:

Tamara and Robert Bennett

James Horstmann

Marina and Andy Scherr

In appreciation of:

A mitzvah that Dr. Jess Mandel, Rabbi Nevarez and Rabbi Bernstein provided, by Linda and Ed Janon

In honor of:

Their 49th wedding anniversary by Sandie and Dan Linn

Sandie and Dan Linn's birthdays by Ron Newell

Ron Newell's birthday by Sandie and Dan Linn

Julie Potiker being named a volunteer of the year, by Valerie Leman

In memory of:

Rose Bachrach by Eileen Bachrach

Belle Borack by Jules Borack

Adolfo Di Capua by the Christy Family

Martin Favero by Rachel Chasin

Miriam Fineman by Rosalind Streichler

Robert Forchheimer by Renee Barnow

William Friedman by Jean Friedman

Hy Glaser by Debra and Ron Herz & Family

Marilyn Glaser by Debra and Ron Herz & Family

Morris Goldstein by Suzanne and Marc Pollack

Jay Gould by Steve Gould and Mary Marshall

Robert T. Gould by Steve Gould and Mary Marshall

Ruth Gould by Steve Gould and Mary Marshall

Belle Greene by Beverlee Greene

Dan Korn by Irene Borevitz

Barbara Kraus by Jean Friedman

Dee Lasher by Lynn Lasher

Sol Lefkowitz by Jim and Joyce Spievak

Nathan M. Lyons by Nancy and David Amiel

Virginia Lyons by Nancy and David Amiel

Jack Nebel by Marla and Gordon Gerson

Yetta Nebel by Marla and Gordon Gerson

Audrey Newman by Margy Newman

Israel Nourok by David and Marlene Nourok

Naftal Reznik by Vivian Resnik and Andrew Ries

Ouzi Sadok by Joanna, Adam and Eva Sadok

Joe Spievak by Jim and Joyce Spievak

Elaine Springer by Alan and Bev Springer

Jack Springer by Alan and Bev Springer

Lawrence Sternfield by Hedy Witham

Ben Stiegler by Sheree and Mayo Stiegler

Jerry Streichler by Rosalind Streichler and Family

Minnie Wolff by Jean Friedman

ONEG SHABBAT/KIDDUSH

In memory of:

Moe Gross by Jacqueline and Jim Carr

Jimmy H. Heimann by Louis Galper

Janet Scharaga by Hermeen Scharaga and Family

Sylvia Rose by Stephanie Petersen

OUTREACH TO INTERFAITH

In memory of:

Dora Edelstein by Stephanie and Steven Steinberg

Paul Merel by Cantor Sheldon Merel, z"l

PRAYER BOOK FUND

In memory of:

Sylvia Goldman Breger by Lynn Breger

RELIGIOUS SCHOOL SCHOLARSHIP FUND

In memory of:

Alan Schreiber by Ann Mound

SOCIAL ACTION

In memory of:

Lois Hazan by Ruth Braun

Sol Lefkowitz by Joyce and Jim Spievak

Elsie Price by Jan Price-Silverman

STAND WITH ISRAEL

In memory of:

Jerome Alexander by Norma Alexander

TORAH STUDY AND MINYAN

In memory of:

David Adam Alper by Janice Alper

Marvin Alper by Janice Alper

Howard Glenn by Judy and Gordon Glenn

Edward Levin by Susan Levin and Family

Sol Vinstein by Susan Levin

Marika Ruth Winheld by Louise Winheld

AUXILIARIES

MEN'S CLUB

Contribution by:

Daniel Epstein

Jean and Arnold Gass

Betsy and Richard Haubrich

Larry Krause

Ann Mound

Leslie Satz

Geri and Donald Shaevel

Elizabeth and Mitchell Siegler

In memory of:

Burt Disner by Louis Galper

GENERAL AND NAMED ENDOWMENT FUNDS

LEE AND FRANK GOLDBERG FAMILY RELIGIOUS SCHOOL ENDOWMENT FUND

In honor of:

Polly and David Feldman's wedding by Miriam Norten and Alex Stolarski

DONA SHENKMAN CAMPERSHIP ENDOWMENT FUND

In memory of:

Dona-Adina baht Ida by Genine Rainbeau-Heart

Cantor Sheldon Merel by Genine Rainbeau-Heart

SILBERMAN FAMILY RELIGIOUS SCHOOL SCHOLARSHIP FUND

In memory of:

Betty Slayen by Nanci and Ron Slayen

LOUIS AND LEE TEMKIN HUNGER PROJECT FUND

In memory of:

Sylvan Cooper by Irene Cooper

MEMORIAL AND NAMED SPECIAL FUNDS

BONNIE GRAFF SCHOLAR-IN-RESIDENCE FUND

In memory of:

Millie S. Friedman by Deborah Horwitz and Paul Nierman

Sidney J. Horwitz by Deborah Horwitz and Paul Nierman

Larry Katz by Bonnie and Barry Graff

Hilda Weiner by Susan and Ed Weiner

KENTON-KLEINBERG FUND FOR THE NEEDY

Contribution by:

Jeff Easton

In memory of:

Lee Levin by Edythe Kenton

HELENE SCHLAFMAN MADRICHIM FUND

In memory of:

Estela Azicri by Natalie Brill

Karol Brill by Natalie Brill

Arthur Goldfarb by Helene and David Schlafman

Betty Schlafman by Helene and David Schlafman

Thank You

to Chris and Jeff Silver, owners of Rough Draft Brewing Co., for donating beer and Kevin Fisher & Family of Rotisserie Affair Catering for providing discounted food and décor for the Torah on tap event.





Be someone's
sunshine
when their
skies are grey



To Give Help or to Receive Help
Contact Caring Community Director
Katey Lindley at 858 900-2525
or klindley@cbisd.org



BETH ISRAEL IS HERE
TO HELP YOU.

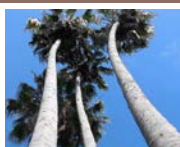
Beth Israel's Cemetery & Mausoleum Association provides Jewish burial space to the community.

Member discounted pricing


For more information,
without obligation, call
Stuart Simmons at 619 871-4160.


Mount of Olives
Memorial Lawns
at El Camino
Memorial Park

Home of
Peace Corridors
at Cypress View
Mausoleum



SO MANY WAYS TO
CELEBRATE!





BETH ISRAEL IS THE
PERFECT HOME FOR YOUR
NEXT CELEBRATION,
CONFERENCE OR EVENT
Contact Mendy Strebe,
Event Operations
Manager, (858) 900-2572,
or mstrebe@cbisd.org

ANNUAL

BETH ISRAEL ANNUAL REVIEW 2020-2021 / 5781

REVIEW

Dear Friends,

The past year was a year like no other. In the face of a global pandemic, we were challenged to adapt to new ways of thinking, learning, and living.

We didn't let the pandemic define us. Instead, we pivoted quickly and made countless adjustments. We welcomed our new Senior Rabbi who helped lead the way. We reimagined our worship services, our schools and programs, in many respects changing forever how we do things. We expanded our outreach and took on new initiatives to remain connected with one another.

The pages that follow highlight the innovation and resilience of our members, volunteers, lay leaders, clergy and staff during this historic time. As we enter our 160th year, we can look back and be inspired as we move forward, stronger than ever.

We could not have done it without you. Thank you for your continued generosity and commitment to Beth Israel. It is your involvement that makes us strong and ensures a vital community for all who seek one.

As we welcome a New Year, may 5782 be a sweet one for you and those you love.



Rabbi Jason Nevarez
Senior Rabbi



Daniel Jones
President



Lesley Mills
Executive Director

SPIRITUAL ENRICHMENT & WORSHIP

V'asu li mikdash, v'shachanti b'tocham.

"Let them build Me a Sanctuary, and I will dwell among them" (Exodus 25:8)

Our goal is to provide diverse opportunities to find inspiration, meaning, comfort, and spiritual enrichment, both personally and communally, through prayer, memory, music, and celebration.

At Beth Israel, Shabbat and holiday services are filled with music and the spirit of community. As we come together to worship throughout the year, we find meaning and joy in the connections we build. Some highlights this year:

65

HOURS OF TORAH STUDY LED BY 7 DIFFERENT TORAH STUDY LEADERS

We dug deeper into our religious texts and found meaning together.

156

VIEWERS ON AVERAGE FOR OUR YOUNG FAMILY SERVICES

Triple the number at prior in-person services. We introduced our youngest members to the sounds, smells, tastes, and warm feelings of Shabbat.

427

VIEWERS ON AVERAGE FOR FRIDAY NIGHT SHABBAT SERVICES

A 200% increase from prior in-person services. We welcomed Shabbat every week live on Zoom from our campus – participants enjoyed the services, music, and active chat as we “gathered” together.

- The Lay-Led Minyan service was attended virtually by **30+** people weekly.
- Rabbi Cantor Arlene Bernstein led our community through weekly study of the counting of the Omer.
- **32** children became b'nai mitzvah – most services were on Zoom, although some were in person as rules became less stringent.
- Rabbi Jason Nevarez had more than **100** Zoom meetings with clergy, board members, staff, and congregants.
- On average, we saw an increase of **200%** attendance in streaming for High Holy Days services.
- The 5-minute-long Drive-by Hakafah during the 5781 High Holy Days took more than **25** hours to coordinate, film, and edit.
(Many thanks to Ken Gimbel!)
- **36** people made up the incredible Adult Choir, the Zimriyah Chorale.



"Every Friday my son asks, 'Is it Young Family Shabbat tonight?' He has loved the chance to sing, dance, and say the prayers with friends in virtual but joyous and welcoming space, and he cannot wait for when they are back in person again." – Lisa M.

LIFELONG LEARNING

Eitz chayim hi lamachazikim bah...

"It is a tree of life for those who hold fast to it..." (Proverbs 3:18)

ADULT EDUCATION

At Beth Israel, one of our aspirations is to pursue excellence in Jewish education for members and non-members of all ages, and to cultivate a congregational culture of lifelong learning.

Highlights this year:

- DayTimers held monthly programs featuring guest speakers, as well as bi-monthly book clubs and film discussions (Movie Mavens). One fascinating program was Todd Solovy talking about Jewish art during COVID.
- Scholar-In-Residence Weekend with Rabbi Dana Evan Kaplan was a highlight.
- Some notable speakers we hosted this past year: Ambassador Dennis Ross and David Makovsky, Alden Solovy, Jonathan S. Tobin and J.J. Goldberg, Yale Strom, Rabbi Marty Lawson, Rabbi Phil Graubart, Rachel Korazim, Eric K. Ward, Amit Peled, and author Leah Koenig.

160+

LEARNING EVENTS FOR ADULTS

Beth Israel continued to foster connections to Judaism and engage our active adult members.

"For many years, Adult Education has been one of the most meaningful aspects of my Beth Israel membership. I enjoy the intellectual challenges and, as importantly, the opportunity to connect and build community with our members." – Mark G.

YOUTH

Lee & Frank Goldberg Family Religious School

- We successfully conducted a robust hybrid religious school education.
- Our ShinShin Omer celebrated becoming an adult bat mitzvah at Beth Israel while she was with us for a year.
- We celebrated **10** students at our virtual consecration ceremony.
- **15** students will participate in a confirmation ceremony in the winter of 2021.
- **26** b'nai mitzvah students attended our 2020 B'nai Mitzvah Boot Camp last summer, either online or in person.

Bill & Sid Rubin Preschool

- In June 2020, **37** families registered for in-person summer camp.
- Our infant program continued to grow – we currently have **18** families.
- We provided a Learning Pod class for K- 2nd grade children to learn virtually from their secular schools.
- The preschool garden has been transformed with a beautiful mural and fabulous garden enhancements made possible by Helene and Allan Ziman, and the playground has a wonderful new climbing structure.
- We celebrated Havdalah & Shabbat each week on Zoom and in our classrooms.

"We are committed to providing a warm and nurturing second home for your child and love seeing all their smiling faces." Cathy Goldberg, Bill & Sid Rubin Preschool Director



SOCIAL ACTION

Al tifrosh min hatzibur...

"Separate yourself not from the community" (Mishnah Avot 2:4)

Beth Israel is a community within greater communities. We are dedicated to pursuing tzedek, justice, to performing mitzvot, and helping our congregants and the greater San Diego Jewish community to become informed and effective in the pursuit of social justice and tikkun olam.

Longtime community programs like HIAS's Refugee Shabbat, the Interfaith Shelter Network Collection, The Hunger Project, Mama's Kitchen, and Rachel's Women's Center reflect this dedication to social action.

- Women of Beth Israel served **200** meals at Rachel's Women's Center this year.
- Social Action collection drives for gas cards, food, and monetary donations at congregational events have seen some of the highest numbers in years in quality and quantity of goods.

Social Action focused significantly on structural racism and cancel culture this year:

- Rabbi Nevarez led a Courageous Conversations Series with Rachel Wegner, focusing on the structural racism that is embedded in our society and in ourselves.
- A highlight was our conversation with Bari Weiss on cancel culture through a Jewish lens. **775** households across the country logged on to hear this talk.
- More than **500** community members participated in this year's MLK Jr. Day of Service.
- People really stepped up this past year for the Hunger Project – we reached a record high level of donations!

CONNECTIONS & COMMUNITY

We seek to create multiple points of connections, so all feel welcome and cared for, and to build a strong sense of Jewish community through different channels.

100

100 ACTIVE MEMBERS OF WOMEN OF BETH ISRAEL AND THE MEN'S CLUB We are building a spirit of friendship, sociability, and community at our temple through monthly programs like Rosh Chodesh events (WBI), and bi-monthly discussion groups and speaker forums (Men's Club).

- Our weekly mindfulness group led by one of our volunteers of the year, Julie Potiker, has changed lives. **25** individuals who come together weekly online have been profoundly affected by the work done in that space.
- Shavua Tov Café, a new weekly program, was created to keep congregants connected and start our week off on a positive note. More than **50** congregants are registered for this Monday morning virtual meet!
- Another new program, Coffee & Connections, is a 45-minute online casual conversation among Beth Israel members, facilitated by Board members.
- About **30** people took advantage of a new program called "Coffee Hour with Rabbi Nevarez." These were intimate Zoom meetings where congregants could get to know our new rabbi on a more personal level.
- TRIBE hosted **12** monthly virtual onegs for young adults in their 20's-40's.



4,331



TOTAL VIEWS
DURING THE 2020
HIGH HOLY DAYS MAIN
SERVICES

70



CHILDREN MAKE
UP OUR TEEN &
YOUTH CHOIRS

1,000+



CALLS MADE BY OUR
CARING COMMUNITY
VOLUNTEERS

2020



OUR VIRTUAL FUNDRAISER,
SPRING FORWARD,
RAISED MORE THAN

\$175,000

RAISE THE PADDLE GENERATED
\$34,207 FOR OUR
CARING COMMUNITY, **100%**
OF WHICH WAS GENEROUSLY
MATCHED BY **PHYLLIS AND
DAN EPSTEIN**

**CINDY'S COLLEGE
CREW** IS GOING STRONG!

WE WERE ABLE TO REACH
OUT TO OUR COLLEGE
STUDENTS, MANY OF WHOM
HAD RETURNED HOME,
AND SENT OVER

**100
PACKAGES!**



300



MISH BAGS WERE
DELIVERED BY CARING
COMMUNITY THIS YEAR

85



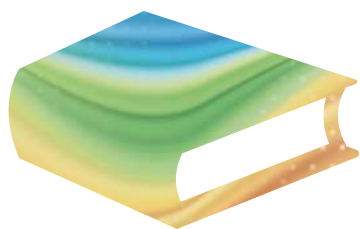
WE FINISHED THE
PRESCHOOL
YEAR WITH 85
FAMILIES

3,300+



EVENT HOURS
WERE ORGANIZED
ON ZOOM

2021



EVEN DURING A GLOBAL
PANDEMIC, **273**
STUDENTS
ENROLLED IN THE LEE &
FRANK GOLDBERG FAMILY
RELIGIOUS SCHOOL

WHILE THE FOOD
INDUSTRY SUFFERED
- THE **FRENCH**
GOURMET
CONTINUED TO
GENEROUSLY SUPPORT
CARING COMMUNITY
AND DONATED
120 QUARTS OF
CHICKEN SOUP



MORE THAN **150**
HOUSEHOLDS LOGGED-
ON TO OUR VIRTUAL
FUNDRAISER, **SPRING**
FORWARD

Al sh'loshah d'varim ha'alam omeid: al haTorah v'al ha'avodah, v'al g'milut chasadim.

"The world stands on three things: Torah, worship, and deeds of loving-kindness" (Mishnah Avot 1:2).

CARING COMMUNITY

We rely upon the foundation of our teachings, values, and beliefs to guide our actions and decisions on the path of *derech erez* ... kindness, justice, and integrity.

This past year was incredibly difficult for so many of us, and it was especially painful to feel helpless when we knew there were people in need and we couldn't act – for several months we could not visit the sick, we could not Fill the Freezer and deliver mish bags – but with *Gimelut Chasadim* (acts of loving kindness) imbedded in our DNA, we discovered alternate ways to support each other.

Caring Community stepped up BIG and helped the community of older adults connect with technology support, scheduling COVID vaccine appointments, and developing a list of mental health physicians and providers. Some other highlights this year:

- Congregants made and donated masks of all sizes from large to very little ones for our toddlers. These masks are now included in all mish bags.
- More than **75** face shields were made by congregants and community partners and immediately put to use by staff.
- Over **40** congregants responded to a call for support in delivering mish bags and Fill the Freezer, once pandemic restrictions were eased.
- We established new connections with Community Partners -- Boy Scout Troop 285 made and donated individually packaged masks. Female Athlete Volunteers donated toys, books, and arts and crafts which are included in mish bags for families with young children facing a challenging time.

"Words cannot express my gratitude for the generous and thoughtful care package. I am beyond grateful to be a part of this caring community." – Loni D

ISRAEL

As part of K'lal Yisrael, we value our connection to Israel and world Jewry and to all humankind. We aim to enhance our congregants' understanding of the unique connection between all Jews and the State of Israel, to express our commitment to our Jewish homeland, to advocate for Israel, and to support the Reform Movement in Israel.

- This year the Israel Committee hosted a number of virtual programs with internationally recognized speakers, as well as a collaboration with the Murray Galinson San Diego – Israel Initiative and Leichtag Foundation. A highlight was a week-long virtual tour of Israel.

INCLUSIVITY & OUTREACH

We aspire to build upon our historic legacy of outreach to interfaith couples and families, and to welcome members of every age, race, sexual orientation, background, lifestyle, situation, and level of observance. We are an embracing Jewish community ... a refuge, a wellspring, a dwelling place on life's sacred journey.

- An overwhelming number of **40** participants joined our Introduction to Judaism class which was held completely online.
- In June 2021, we celebrated Pride Shabbat and heard some stirring and emotional stories by Beth Israel members.



EVENTS & HOLIDAYS

Our virtual holiday celebrations and drive-through festival experiences were loved by all.

- More than **200** households joined us virtually for our Passover seder.
- Our beautiful building was lit up with **HUNDREDS** of lights during our Chanukah Drive-Through.
- Beth Israel's Drive-Through Sukkah allowed **DOZENS** of members to experience Sukkot.
- **100s** of people enjoyed this year's entertaining Purim Spiel and drove through our Purim CAR-nival.

MEMBERSHIP

Thanks to so many of you, we continue to make membership possible for all individuals and families, regardless of financial capacity. We currently have:

136 Ner Tamid Circle members
134 Dor I'Dor Society members
173 Sustaining members

In a year during which we were not able to assemble in person, people continued to join as members:

1,136 member households
68 new member households since July 1, 2020
14 new families in early childhood education

FINANCIAL HEALTH & OUR FUTURE

INVESTING IN OUR FUTURE

Beth Israel has remained strong and responsive during a year like no other. The pandemic brought additional financial pressures, but we responded quickly by reducing expenses and leveraging other resources, such as government funding to help us bridge the revenue shortfalls. Our financial situation is stable for the year ahead due to the procurement of a PPP loan. In 2021-22, we anticipate a rebound of school and rental revenue although not quite yet to pre-pandemic levels.

As we look to the future, we are aware that government assistance will not continue. We are taking steps to address this change by renewing our strategic and financial plan to align with long-term objectives and continuing to identify financial improvements and innovations to increase the efficiency of our resource utilization.

Your financial support is at the foundation of Beth Israel's fiscal well-being. Some examples of ways you can help include increasing your membership commitment, sharing with the community why Beth Israel is your synagogue home, and making a legacy gift. We need your support to be able to provide you with the services, programming and welcoming community which we call home.

With a government grant, Beth Israel made important enhancements to our security system. We upgraded:



security cameras



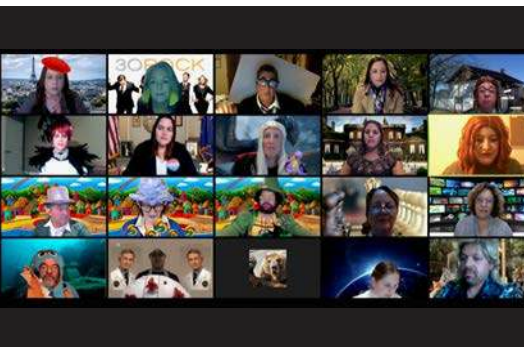
communications systems



alarms



added bullet resistant glass



Thank You

TO OUR NER TAMID CIRCLE & DOR L'DOR SOCIETY MEMBERS

Your generosity makes membership open to all.

As of: July 15, 2021

NER TAMID LIFE MEMBERS

Sandra and Earl Altshuler
Deanne* and Dr. Leonard Bloom
Phyllis Cohn and Arthur Brody*
Alberta and Charles *Feurzeig
Lisa Massry Neichin and Barry Neichin
Evelyn and Ernest Rady
Cassidy and Jeremiah* Robins
Iris and Matt Strauss
Carol and Charles* Swimmer
Rachel Swimmer-Flores and Armando Flores

NER TAMID ANGELS

Allison and Robert Price

NER TAMID LEADERS

Debby and Hal Jacobs
Karen Foster Silberman and Jeff Silberman
Anne and Ron Simon

NER TAMID BUILDERS

Melissa and Michael Bartell
Joan and Jeremy Berg
Barbara Bloom
Lisa Braun-Glazer and Jeff Glazer
Deborah and Dan Carnick
Pamela and Edward Carnot
Phyllis and Dan Epstein
Kathryn and Andrew Garman
Lee and Frank Goldberg
Barbara Goldman and Howard Katz
Terry Klitzner
Betty and Len Kornreich
Lawrence Krause
Sandra Levinson
Meg and Jess Mandel
Jackie and Charlie Mann
Haydee Ojeda-Fournier and Andy Lowy
Jeanette and David Osias
Lorne Polger
Ellen Potter and Ron Evans
Donald Slate
Jamie and Kevin Wechter
Bebe and Marvin Zigman
Helene and Allan Ziman

NER TAMID MITZVAH

Nancy and Dean Abelson
Nenette Adelson-Rodriguez and
Walter Rodriguez
Betty Amber
Ronit and Tim Austgen
Rusti Bartell-Weiss
Nan and Alan Barth
Judith and Larry Belinsky
Michelle and Kevin Berkowitz
Julie and Edgar Berner
Bev and Len Bernstein
Terri Bignell
Joyce and Bob Blumberg
Irene Borevitz
Carol Butler and Larry Gratt
Stan Caplan
Kim Carnot and Traci Carpenter
Silvana and Richard Christy
Amy Corton and Carlton Eibl
Julie and Mitch Dubick
Lois and Marty Ehrlich
Lynn Epstein
Sandy and Janine Feldman

Suzi and Bernie Feldman
Diane and Elliot Feuerstein
Esther Fischer
Susanna and Michael Flaster
Dolores Forsythe and Allan Rudick
Lisa Foster and Alan Bersin
Carol and Ron Fox
Barbara Fryer and Robert Dighello
Elaine Galinson and Herb Solomon
Heidi Gantwerk and Andy Mayer
Marcia and Matt Gettinger
Bobbie and Jon Gilbert
Edward Goldberg
Neoma Goldhammer
Allison and Matt Golding
Diana Hahn
Julie and Howard Haimsohn
Merrill and Bob Haimsohn
Sophie and Henry Haimsohn
Alan Haubenstock
Betsy and Richard Haubrich
Marcia Hazan and Mark Cammell
Carolyn and Gary Jacobs
Linda and Ed Janon
Margaret Katleman
Heather and Brandon Keith
Edythe Kenton
Karen and Warren Kessler
Lainie Lesser-Mark
Steve and Heidi Levin
Stefanie Levine and Michael Breslauer
Judy and Marshall Lewis
Theodora Lewis
Hollis and Al Litrownik
Gail and Jim Malkus
Meryl Maneker and Peter Herman
Julianne and Greg Markow
Mary Marshall and Steve Gould
Lynn and Michael Maskin
Robert McNeese
Margaret and Paul Meyer
Evelyn Mishuck
Susan and Jim Morris
Anne Nagorner
Rebecca and Larry Newman
Christine Nievergelt and David Chait
Linda and Larry Okmin
Barbara Parker and Geoff Wahl
Linda Platt
Laurie Price
Jeannie and Arthur Rivkin
Arlene Rosen
Sheryl and William Rowling
Barbara and Norm Rozansky
Brigitte and Jerry Salomon
Jeffrey Sandler
Leslie Satz
Ingrid Scharpf and Roger Acheatell
Mary Ann and George Scher
Lori Shearer and Brian Haubenstock
Elissa Shuchter and Stanley Fader
Harriet and Alan Shumacher
Elizabeth and Mitch Siegler
Marcie Sinclair and Andy Ratner
William Snyder
Penny Spector
Karen and Richard Stern
Martin Stern
Deborah Szekely
Staci Tiras-Jones and Daniel Jones

Karin and Tony Toranto
Ronni and Eric Udoff
Susan and Richard Ulevitch
Audrey Viterbi and Dan Smargon
Ann and Ben Weinbaum
Caryl Witte

DOR L'DOR SOCIETY

Anonymous (4)
Nancy and Dean Abelson
Janet and Larry Acheatell
Ingrid H. Scharpf, MD and Roger J. Acheatell, MD
Loretta Adams
Grayton Allen*
Betty Amber
Murray* and Anne-Marie Anker Endowment
David Bark
Renee Barnow
Stanley Beck*
Leslie Belden
Rabbis Michael and Aliza Berk
Jack Berkman
Michelle and Kevin Berkowitz
Julie and Edgar Berner
Robert Berton
Beyer Family
Barbara Bloom
Esther* and Jack* Bloom
Joyce and Robert Blumberg
Jenny and Andrew Bratt
Lillie* and Robert* Breitbard
Merle and Mitchell Brodie
Sophie* and Arthur* Brody
Hattie Brooks*
Betty Byrnes* and Dr. Donald* Byrnes
Kim Carnot and Traci Carpenter, Emma and
Harley Carpenter
Marilyn Cohen*
Amy Corton and Carlton Eibl
Susan and Damon Couch
Clive David*
Deborah DeBow and Herb Weissman
Estelle* and Lou* Dunst
Stacey and Jeff Eaton
David Engel*
Phyllis and Dan Epstein
Diane and Elliot Feuerstein
April and Matthew Fink
Nadine and Philip* Finkel
Esther Fischer
Sigrid* and Jack* Fischer
Judith and Tom Fisher
Susanna and Michael Flaster
Pauline Foster*
Carol and Ron Fox
Davis B. Fox
Marcia and Leonard Fram
Elaine Galinson and Herbert Solomon
Heidi Gantwerk and Andy Mayer
Bobbie and Jon Gilbert
Francine and Phillip Ginsburg
Lee and Frank Goldberg Family
Linda and Jerry Goldberg
The Estate of Jean and Herman Gordon*
Charlotte Haas Trust*
Ellen and Herbert Hafter Jr.
Diana Hahn
Barbara* and Alan Haubenstock
Barbara and Gordon* Haworth
Jimmy H. Heimann*
Tracy and Gary Hirschfeld

Debbie Horwitz and Paul Nierman
Emily and Chris Jennewein
Ellen and Adam Kahn
Lisa and Douglas Kalal
Margaret and Jerald* Katleman
The Klitzner Family
Zena* and Dr. Donn* Kobernick
Fern* and Allan Kohn
Jill and Martin Koller
Sallye* and Lawrence Krause
Ava and Michael Kurnow
M. Larry Lawrence*
Frances B. Leslie*
Lainie Lesser-Mark
Terri Levenson
Liz Levine and Andrew Resnick
Sandra and Arthur* Levinson
Leona and Dr. Jerome Levy
Theodora Lewis
Marsha and Herbert Lubick
Gail and Jim Malkus
Meg and Jess Mandel
Meryl Maneker and Peter Herman
Julianne and Greg Markow
Mary Marshall and Steve Gould
Lynn and Michael Maskin
Jessica and Michael Middleton
Lesley Mills
Elaine Moser*
Ann Levenstein Mound
Nancy and Alan Nevin
Ronald J. Newell
Rebecca and Dr. Lawrence Newman
Anna Newton and Steven Guthauser
Haydee Ojeda-Fournier and Andy Lowy
Sima and Joseph* Oppenheimer
Renee and Joseph* O'Rourke
Linda and Shearn* Platt
Cynthia* and Lorne Polger
Seymour Rabin*
Vivian Rich
Barbara and Dr. Norman Rozansky
Rae and Ed* Samiljan
Marjorie and Sanford Schane
Mary Ann and Dr. George Scher
Brenda and Ben Schneider
Laura Schumacher
Judi and Robert Schwartz
May Sebel
Sydney and Rick* Serwin
The Shapiro Family
Elizabeth and Mitchell Siegler
Karen Foster Silberman and Jeffrey Silberman
Bev and Howard Silldorf
Anne and Ronald Simon
Debra and Robert Skomer
Gayle* and Donald Slate
Penny and Sidney* Spector
Susan and Rabbi Jonathan Stein
Mickey Stern*
Celia Tingley
Susan and Richard Ulevitch
Tammy and Louie Vener
Diane and Buddy Voit
Jamie and Kevin Wechter
Cathy and John Weil
Arlene* and Fred Weitzen, Jr.
Cynthia* and Sydney* Wexler
Elaine and David Wilson
Geraldine* and Lt. Col. (ret) Hubert* Wolff
Marcia and Don Wolochow

**of blessed memory*

Thank You

TO OUR SUSTAINING MEMBERS

Your contributions to Beth Israel is thoughtful and lasting.

As of: July 15, 2021

Emelya and Farshad Ahadian	Joan and Arnie Gass	Marsha and Al Korobkin	Dawn and Jonathan Rosenblum
Lynn and Richard Altes	Sylvia and David Geffen	Ginger and Phil Kossy	Rachel Ross and Bruce Biederman
Marina Baroff and Bob Kaplan	Marla and Gordon Gerson	Martha and Jerry Krasne	Lauren and Dan Rossen
Brooke and Matthew Bassuk	Joanne and Ken Gimbel	Hilary and Scott Krause	Kari Rubin
Rebecca Bellingham and Benjamin Saltman	Jamison and Robert Ginsberg	Robin and Joth Layton	Lynn Sampson
Margaret and Gary Bellowe	Francine and Phil Ginsburg	Jane and Herbert Lazerow	Ami and Derek Samuel
Ellen Benkle	Barbara and Richard Gitlin	Valerie Leman and Ross Cohen	Laurel and Seth Schechter
Sherrie and Jonathan Benumof	Anna Gluzman and Michael Galperin	Nikki and Robert Levy	Stefanie Schiff and Joel Smith
Cassi and Dean Birnbaum	Andrea and Russ Gold	Tracy and Brad Levy	Gina and Jay Schneider
Sarah and William Blair	Linda and Jerry Goldberg	Kathy Lewis and Michael Rosenfeld	Erin and Leon Schorr
Anne and Arthur Bleier	Pnina and Bar-Giora Goldberg	Sandie and Dan Linn	Gail and Jonathan Schwartz
Ricki and Harold Block	Rachel and Ryan Goldenhar	Elissa Livingstone	Karen and Brian Seltzer
Lannette and Todd Bloom	Sharon and Eric Goodman	Barbara Lounsbury and Jonathan Siegel	Randi and Stuart Shanken
Paula and Eric Book	Stacey Goodman-Eaton and Jeff Eaton	Jennifer and Rich Lutz	Dani and Jason Sicklick
Judith and Paul Braun	Ellen and Peter Gordon	Tanya and Andrew Malk	Darcy and Paul Siegel
Michelle and Eric Breier	Lynn and Dick Gordon	Dina Massry and Kenneth Grudko	Judith and Howard Silberman
Liz and Seth Brown	Lynn Gottesman and Dan Picker	Dana and Carter Meiselman	Beverly and Howard Silldorf
Seekey Cacciatore and Cory Briggs	Kay and Bill Gurtin	Shelley and Paul Michelson	Karla and Ned Silver
Candace Carroll and Len Simon	Allison and Brian Habas	Jessica and Michael Middleton	Lee-Ann and Matt Silver
Lisa and Douglas Chang	Ellen and Herb Hafter	Estelle and Jim Milch	Beth and Jerry Silverman
Avalee and Howard Cohen	Stacy and Jon Halberg	Jorrie Miller and Jay Berkowitz	Evelyn and Ed Singer
Heather and Ron Cohen	Jerome Hall	Leslie and Chris Miller	Nanci and Ron Slayen
Stacey Coleman and Mike Chasin	Kristin and Andrew Hampshire	Shelley Miller-Odelson and Dave Odelson	Heather and Jayson Smith
Susan and Damon Couch	Susan Harrison	Ami and Bill Minter	Esther and Steve Solomon
Roy David	Karen Hartz and Jan Adler	Lisa and Alex Molmud	Sheri and Steven Spector
Karen and Paul DePodesta	Lisa and Chuck Helsel	Rita and Barry Moskowitz	Joyce and Jim Spievak
Frank and Laura Drummond	Jenny Hill Bratt and Andrew Bratt	Alicia and Elias Moya	Stephanie and Steve Steinberg
Laura and Phillip Ducoffe	Tracy and Gary Hirschfeld	Perla and Jeff Myers	Amy and Michael Stern
Jennifer and Anthony Edelstein	Jenny and Jason Hochberg	Jody and Jon Newlander	Sabine and Neil Stern
Phyllis Elkind and Tom Harwayne	Heather and David Hofflich	Deanna Nino and Jonah Goldstein	Ione and Tony Stiegler
Emily and Asaph Engel	Linda and Neal Hooberman	Andrea and Larry Oster	Treger and Robert Strasberg
Amy and Steve Epner	Melinda and Steve Horowitz	Stacy and Greg Ostrow	Judy Tropp-Schwimmer and Jeff Schwimmer
Cary and Robin Eskow	Judy Horowitz-Glenn and Gordon Glenn	Janet and John Perlman	Tammy and Louie Vener
Jessica and Michael Feinman	Jennifer Isaac and Phil Thalheimer	Marilyn and Charles Perrin	Diane and Buddy Voit
Paige Ferguson and Adam Gerger	Emily and Chris Jennewein	Mona and Jeff Platt	Cathy and John Weil
April and Mathew Fink	Sarah and Tom Karp	Lee and Stuart Posnock	Cindy and Geoff Weinstein
Carla and Bob Fox	Louise and Charles Kaseff	Julie and Lowell Potiker	Sandra Weinstein
Jan and Helane Fronek	Jan and Irv Kass	Adrienne and Richard Prager	Heather and Michael Weisman
Rebecca Gaffney and Jamie Levine	Berdele and Dick Katz	Angeli and Kevin Rapeport	Joanie and Ken Weiss
Donna and Bob Gans	Carlos Kelvin	Matilda Remba and Bill Wachsmann	Allyson and Earl Williams
Stephanie and Trevor Garb	Perry Kirkland and Uriel Grezemkovsky	Lauren and Bob Resnik	Ricky and Polly Wolf
Gwen and Corey Gass	Betsy and Jeremy Kleiger	Vivian Reznik and Andrew Ries	Cecilia and Scott Wolfe
	Kathy Knotts-Lavine and Dennis Lavine	Sharon and Stephen Ritter	Gail and Dan Zides
	Joy Koda and Jon Rosen	Theo Romain	Sarah and Charles Zuckerman



CONGREGATION
BETH ISRAEL

The Beth Israel Quarterly is published
Fall, Winter, Spring and Summer by
Congregation Beth Israel of San Diego

9001 Towne Centre Drive
San Diego, CA 92122
Voice: 858 535-1111
Fax: 858 900-2501
Bill & Sid Rubin Preschool 858 900-2530
Lee & Frank Goldberg Family
Religious School 858 900-2550
www.cbisd.org / cbi@cbisd.org
Communications Manager Simone Blaise
sblaise@cbisd.org 858 535-1111

Senior Rabbi Jason Nevarez
Rabbi/Cantor Arlene Bernstein
Associate Rabbi Jeremy Gimbel
Executive Director Lesley Mills
President Dan Jones



Like us on Facebook: Congregation Beth Israel



Follow us on Instagram: @bethisraelsandiego

Non-Profit Org.
U.S. Postage
PAID
San Diego, CA
Permit No. 166



Monday, September 20

5:30 p.m. Sukkot Picnic

Tuesday, September 21

10:00 a.m. Sukkot Service, followed by a light Kiddush lunch

Friday, September 24

6:15 p.m. Shabbat Sukkot Service and Celebration

Monday, September 27

6:30 p.m. Erev Simchat Torah Service

Tuesday, September 28

10:00 a.m. Sh'mini Atzeret/Simchat Torah Yizkor Service, followed by a light Kiddush lunch

Sunday, November 14

4:00 p.m. Thanksgiving Interfaith Service & Service Project